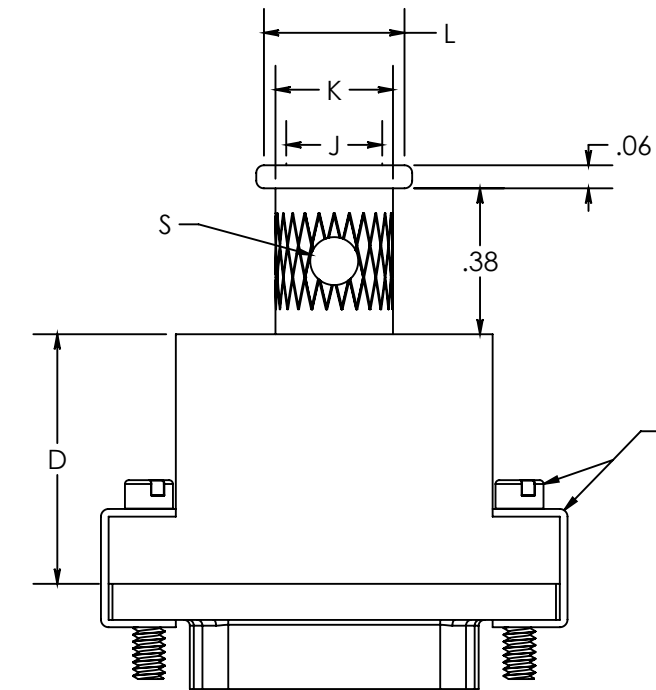


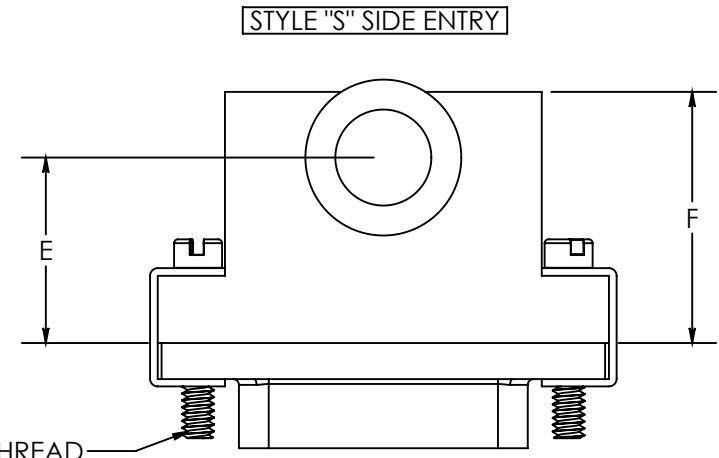
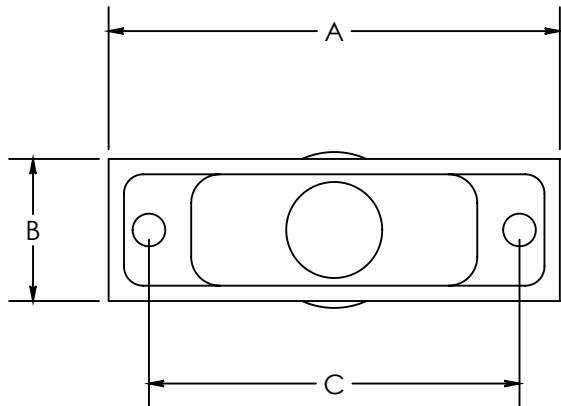
REVISION HISTORY			
REV	DESCRIPTION	DATE	APPROVED
A	INITIAL RELEASE	09/11/20	09/14/20



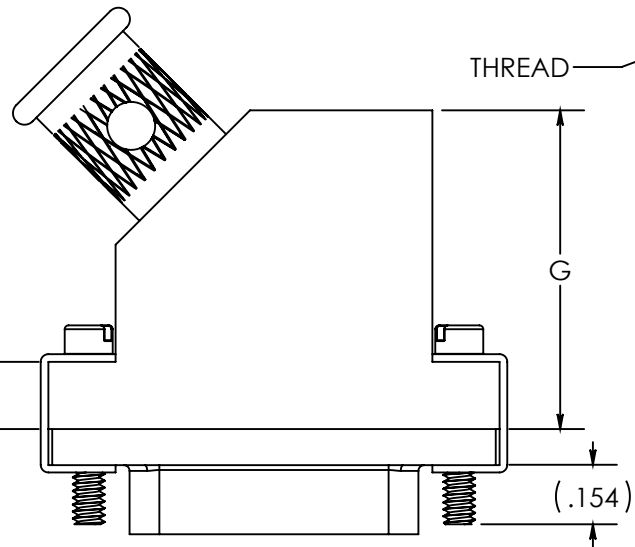
STYLE "T" TOP ENTRY

CONNECTOR SHOWN FOR REFERENCE ONLY.

HARDWARE SHOWN FOR REFERENCE ONLY.



STYLE "S" SIDE ENTRY



STYLE "E" 45° ENTRY

	NAME	DATE
DRAFTER	J. MANGUS	09/11/20

TOLERANCE: {UNLESS OTHERWISE NOTED}

2 PLACE DEC ± .02
 3 PLACE DEC ± .01
 ANGULAR = ± 1°
 UNLESS OTHERWISE SPECIFIED
 DIMENSIONS ARE IN INCHES



7706 E. OSIE - WICHITA, KS. 67207
 www.isodyneinc.com
 U.S. PATENT # 5,769,665
 CAGE CODE # 031M6

TABLE I

SHELL SIZE	A	B	C	D	E	F	G MAX	THREAD	ENTRY SIZE
9	.775	.37	.565	.32	.435	.637	.680	2-56 UNC	08
15	.925	.37	.715	.44	.440	.673	.730	2-56 UNC	08
21	1.075	.37	.865	.56	.458	.707	.765	2-56 UNC	08
25	1.175	.37	.965	.62	.483	.748	.830	2-56 UNC	08
31	1.325	.37	1.115	.68	.476	.756	.890	2-56 UNC	08
37	1.475	.37	1.265	.72	.478	.774	.955	2-56 UNC	08
51	1.425	.40	1.215	.75	.548	.859	1.005	2-56 UNC	10
69	1.730	.40	1.515	.75	.548	.859	1.005	2-56 UNC	10
100	2.160	.45	1.800	.81	.687	1.014	1.080	4-40 UNC	12

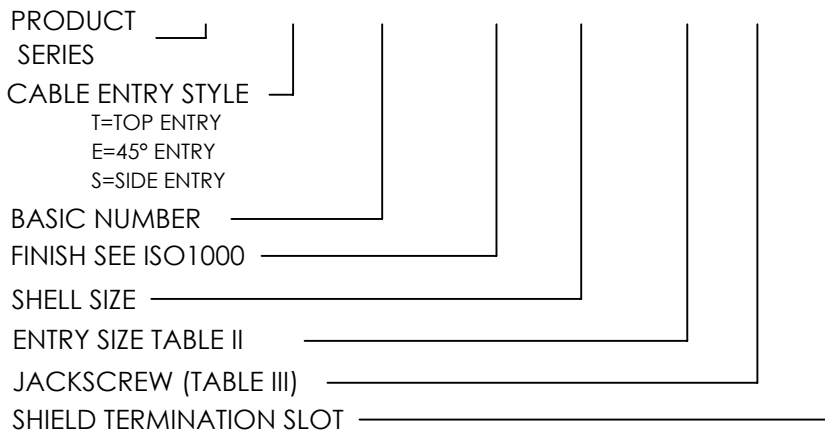
TABLE II

ENTRY SIZE	J	K	L	S
08	.250	.330	.406	.170 (1)
10	.312	.392	.469	.170 (2)
12	.375	.455	.531	.170 (2)

TABLE III

SYMBOL	QTY	JACKSCREW TYPE
B	(2)	MALE FILLISTER HEAD W/CLIP
H	(2)	MALE HEX SOCKET W/CLIP
F	(2)	FEMALE JACKPOST

ISO T 315 M 25 08 B -S



- 1) SHELL SIZE 9-69 TO USE CLIP P/N ISO215C
- 2) SHELL SIZE 100 TO USE CLIP P/N 90-0440-016
- 3) FOR HARDWARE IN TABLE III REFER TO ISO 215HD
- 4) SPRING BAND INCLUDED WITH ALL PARTS

	NAME	DATE
DRAFTER	J. MANGUS	09/11/20
TOLERANCE: {UNLESS OTHERWISE NOTED}		
2 PLACE DEC ± .02		
3 PLACE DEC ± .01		
ANGULAR = ± 1°		
UNLESS OTHERWISE SPECIFIED DIMENSIONS ARE IN INCHES		



7706 E. OSIE - WICHITA, KS. 67207
 www.isodyneinc.com
 U.S. PATENT # 5,769,665
 CAGE CODE # 031M6