

NOTES:

- ASSEMBLY SHALL BE BAGGED AS PAIRS, BAG IDENTIFIED WITH MFG'S NAME & P/N.
- HARDWARE INTENDED FOR USE ON ISODYNE BACKSHELLS SERIES 205 & 207 MATING WITH MIL-DTL- 24308 SERIES CONNECTORS.
- MATERIAL/FINISH:
CLIP & JACKSCREW - SST/PASSIVATED.

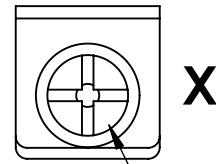
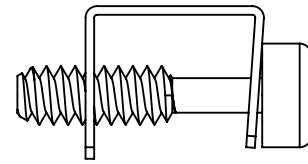
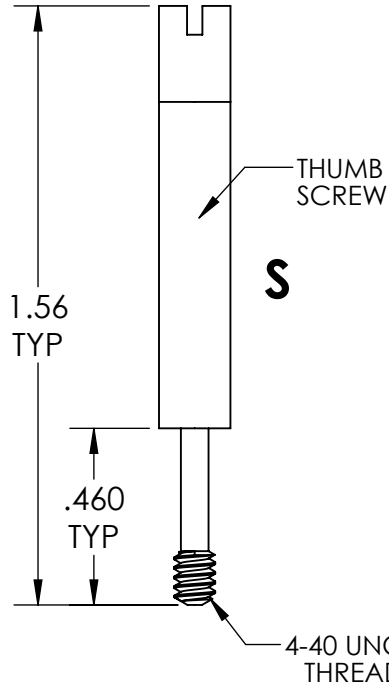
| REVISION HISTORY | | | |
|------------------|-------------------------|----------|----------|
| REV | DESCRIPTION | DATE | APPROVED |
| B | 24308 Mounting Hardware | 09/13/12 | |

D

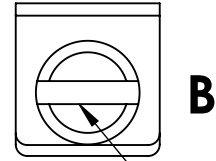
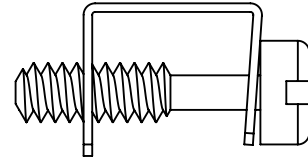
C

B

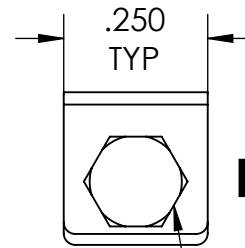
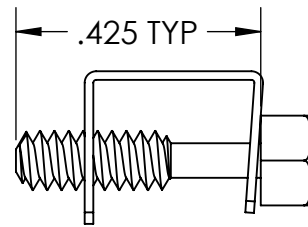
A



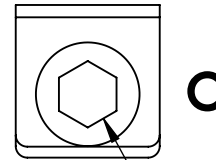
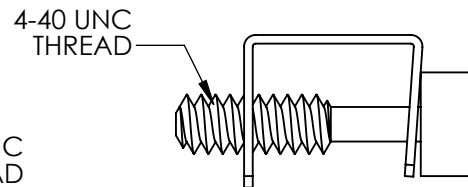
X
PHILLIPS HEAD
SCREW



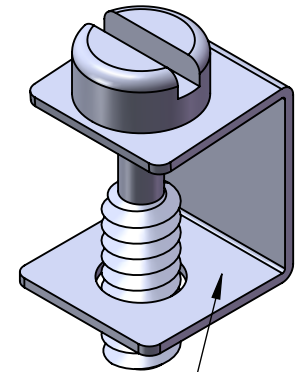
B
FILLISTER HEAD
SCREW



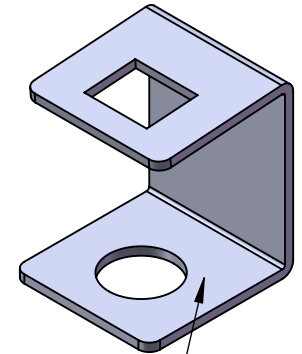
H
HEX HEAD
SCREW



OMIT
SOCKET HEAD
SCREW

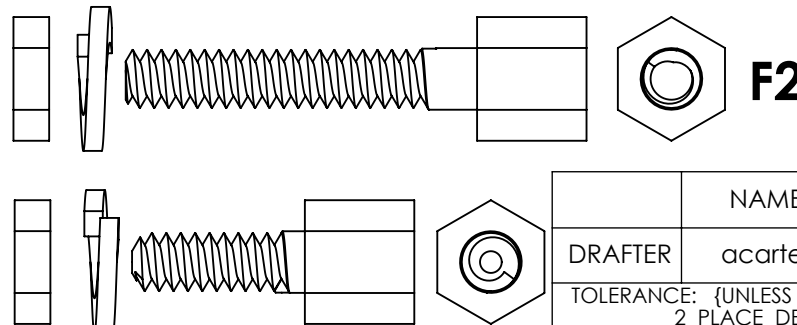


ISO VIEW REF ONLY
HARDWARE SHOWN
FOR REF ONLY



ISO VIEW REF ONLY
SHOWN WITH OUT
HARDWARE

P/N BREAKOUT ISO 205-207 J H
ISODYNE IDENT
BASIC NUMBER
J = JACKSCREW / POST (ONLY)
C = CLIP (ONLY)
(OMIT FOR COMPLETE ASSEMBLY)
B = FILLISTER HEAD SCREW
H = HEX HEAD SCREW
S = THUMB SCREW
X = PHILLIPS HEAD SCREW
F = FEMALE JACK POST W/LOCK WASHER
& NUT, THREADED LENGTH (.450) INCHES
F2= FEMALE JACK POST W/LOCK WASHER
& NUT, THREADED LENGTH (.625) INCHES
OMIT FOR SOCKET HEAD SCREW



F

F2

| | NAME | DATE |
|--|---------|----------|
| DRAFTER | acarter | 04/28/11 |
| TOLERANCE: {UNLESS OTHERWISE NOTED} | | |
| 2 PLACE DEC ± .030 | | |
| 3 PLACE DEC ± .015 | | |
| ANGULAR = ± 2° | | |
| UNLESS OTHERWISE SPECIFIED DIMENSIONS ARE IN INCHES | | |

ISODYNE
7706 E. OSIE - WICHITA, KS. 67207
www.isodyneinc.com

ISODYNE PART NUMBER:
ISO205-207
U.S. PATENT # 5,769,665
CAGE CODE # 031M6