

MICRO D 215 SERIES

ISODYNE INC.

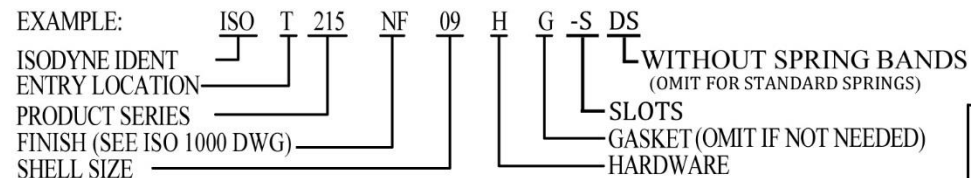
7706 E. OSIE – WICHITA, KS. 67207

U.S. PATENT # 5,769,665 & 6,918,785

CAGE CODE # 031M6

D SUB BACKSHELL, EMI / RFI
SPRING BAND

PART NUMBER DEVELOPMENT



TOLERANCE: {Unless otherwise noted}
2 PLACE DEC ± .030
3 PLACE DEC ± .015
ANGULAR ± 2°

DRAWING ISO 215 REV. "R"

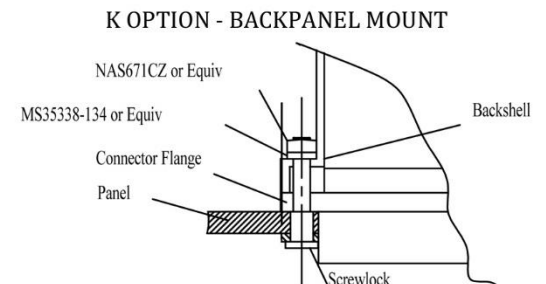
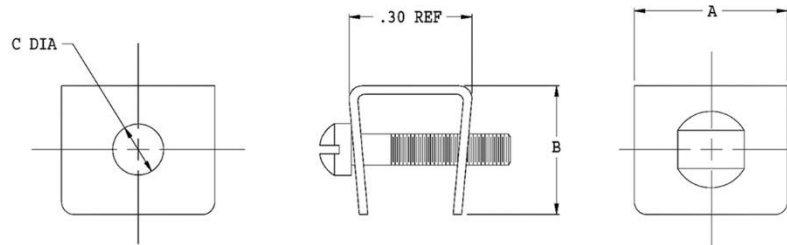
TABLE I - DIMENSIONS				TOP ENTRY					SIDE ENTRY		
SHELL SIZE	A	B	C	D	M	N	SPRING	S (# OF SLOTS)	D1	M1	N1
09	.775	.37	.565	.32	.281	.312	ISO100	(1) .170	.72	.188	.255
15	.925	.37	.715	.44	.281	.420	ISO100	(2) .250	.78	.250	.430
21	1.075	.37	.865	.56	.281	.590	ISO100	(2) .250	.88	.344	.590
25	1.175	.37	.965	.62	.281	.690	ISO100	(2) .500	.91	.375	.690
31	1.325	.37	1.115	.68	.281	.820	ISO37	(2) .500	.97	.438	.830
37	1.475	.37	1.265	.72	.281	.970	ISO37	(2) .500	N/A	N/A	N/A
51	1.425	.40	1.215	.75	.312	.920	ISO37	(2) .500	N/A	N/A	N/A
51-2	1.835	.34	1.615	.75	.281	1.030	ISO37	(2) .500	N/A	N/A	N/A
69	1.730	.40	1.515	.75	.312	1.190	ISOEL1	(2) .500	N/A	N/A	N/A
100**	2.160	.45	1.800	.81	.360	1.260	ISOEL1	(2) .500	1.16	.625	1.320
SIDE ENTRY 37	1.475	.37	1.265	N/A	N/A	N/A	ISO51	(2) .500	1.03	.500	.980
SIDE ENTRY 51	1.425	.40	1.215	N/A	N/A	N/A	ISO51	(2) .500	1.03	.500	.930

NOTE* D1, M1, N1 ARE FOR SIDE ENTRY ONLY. RIDGE OF ELLIPTICAL ENTRY NOT TO EXCEED DIMENSION D1 (HEIGHT OF SHELL)

NOTE ** SIDE ENTRY NOT AN OPTION

NOTE *** SHELL SIZE 100 WILL RECEIVE 4-40 HARDWARE

CLIP DIMENSIONS			
SHELL SIZE	A	B	C DIA.
09, 15, 21, 25, 31, 37, 51, 51-2, 69	.172	.21	.090
100	.250	.32	.120



Washers (4 supplied per Jackpost)
See Table Below

PANEL THICKNESS	WASHERS REQUIRED
0.047	4
0.062	3
0.093	2
0.109	2
0.125	1
0.156	N/A

ISODYNE INC

7706 E. OSIE – WICHITA, KS. 67207
U.S. PATENT # 5,769,665 & 6,918,785
CAGE CODE # 031M6

D SUB BACKSHELL, EMI / RFI
SPRING BAND

HARDWARE OPTIONS
 B - MALE FILLISTER HEAD
 E - EXTENDED JACKSCREW
 H - MALE HEX SOCKET
 F - FEMALE JACKPOST
 K - BACKPANEL MOUNT

TOLERANCE: {Unless otherwise noted}
 2 PLACE DEC ± .030
 3 PLACE DEC ± .015
 ANGULAR ± 2°